

# Greenshades Mag.NET Installation

Installation Manual



# Mag.NET Installation

Greenshades Software  
7800 Belfort Parkway  
Suite 220  
Jacksonville, FL 32256  
(904) 807-0160  
[www.greenshades.com](http://www.greenshades.com)



Please use this manual to install the Greenshades Mag.NET. After completing the steps in this installation manual, please refer to the User manual for further steps in completing your magnetic media. If you have any questions about steps in this documentation, please contact technical support by email at [support@greenshades.com](mailto:support@greenshades.com) or by phone at 904-807-0160.

## Table of Contents

Step 1 Install Required Programs .....	3
Step 2 Install Mag.NET .....	4
Step 3 Configure Dynamics & eEnterprise .....	7
Step 4 Configure Darwin .....	9
Step 5 Configure Solomon.....	10
Step 6 Configure Accpac .....	11
Step 7 Notes .....	12

## Step 1 Install Required Programs

### **Required Programs:**

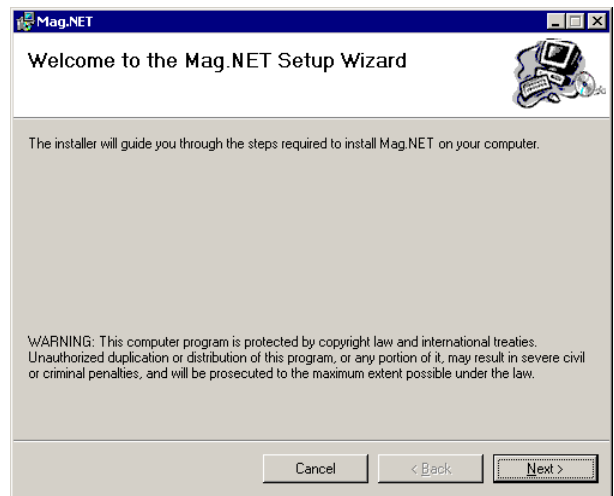
Microsoft .NET Framework

Internet Explorer 5.51 or higher

These programs can be found on the CD that was shipped to you from Greenshades, in the Required Programs directory. If you were not shipped and downloaded the Greenshades Mag.NET, you can download these programs from the [website](#) also, under the Required Programs section. If you do not have these installed please install them now. If you are unsure if you have these installed please contact your IS / IT department or Greenshades to help determine if you have installed.

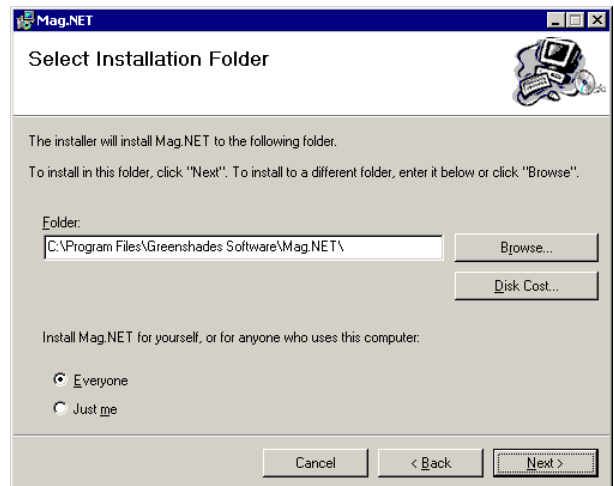
## Step 2 Install Mag.NET

1. Please make sure that your accounting package is closed. If you are logged into your accounting package, please exit the program before continuing.
2. Insert the Mag.NET CD into your computers CD-ROM Drive. If the program fails to automatically start, click on start -> run -> browse, choose the setup.exe file on the CD and click OK.
3. On the **Welcome to the Mag.NET Setup Wizard**, Click **Next**.

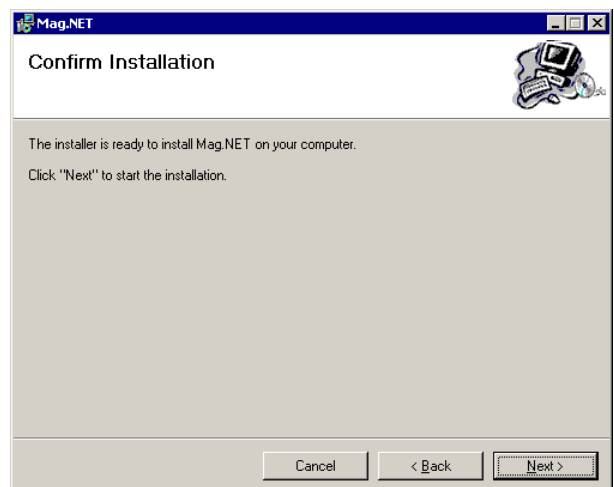


4. On the **Select Installation Folder** window, select the correct path that you want Mag.NET installed to. This is where the Mag.NET program files will be installed to and located. \*Note this path should **NOT** be the directory in which Great Plains is installed. Click the circle next to **Everyone**.

When completed, click **Next**



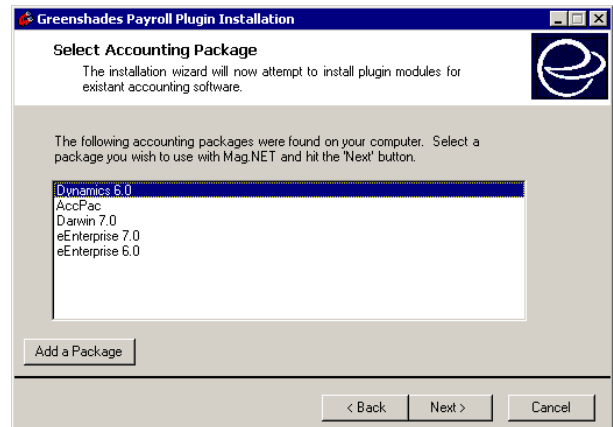
5. On the **Confirm Installation** window, click **Next** to start the installation.



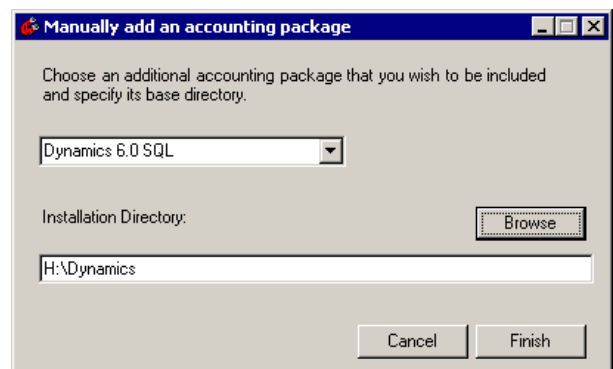
6. On the **Greenshades Payroll Plugin Installation** window. Click **Next**.



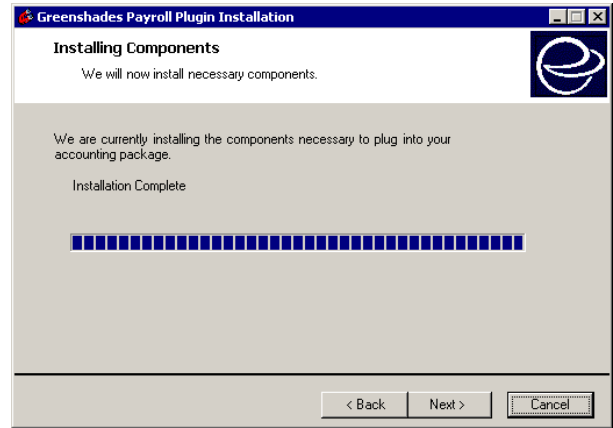
7. On the Select Accounting Package window, click on your **accounting package**.



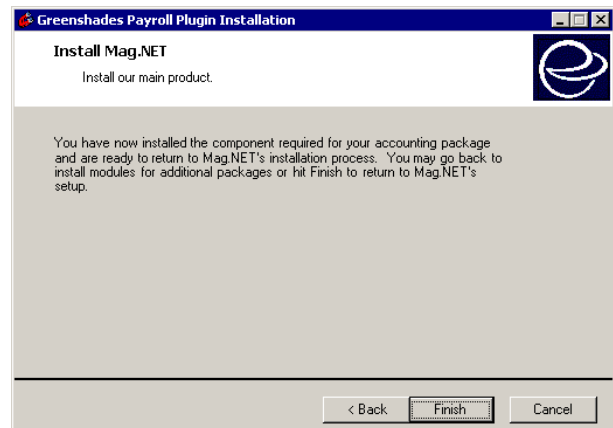
If your package is not listed, click on the **Add a Package** button. Select your accounting package from the drop down list. Then press the Browse button to go to the directory in which the accounting package is installed. Double click on one of the files in the directory. The path to that directory should be in the **Installation Directory** box. Click **Finish**. Select your **accounting package**, Then click **Next**.



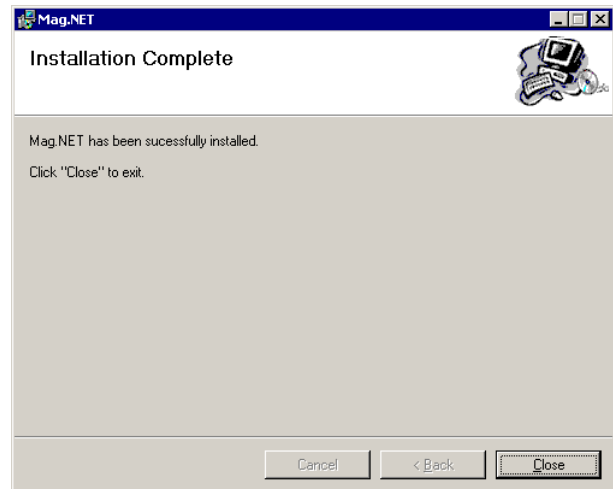
8. On the **Installing Components** window, click **Next**.



9. On the **Installing Mag.NET** window, click **Finish**.

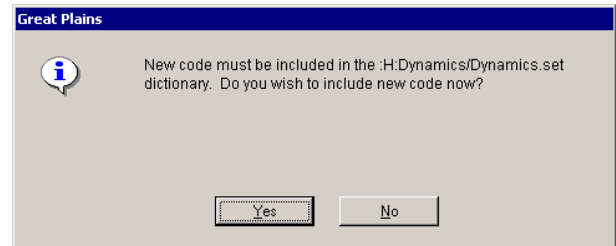


10. On the **Installation Complete** window, click **Close**.

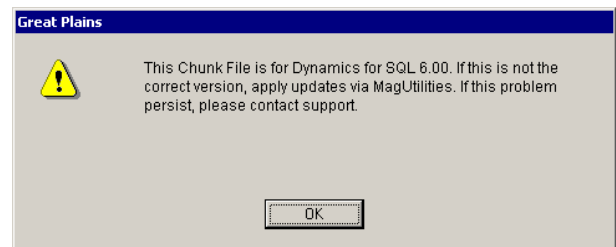


## Step 3 Configure Dynamics & eEnterprise

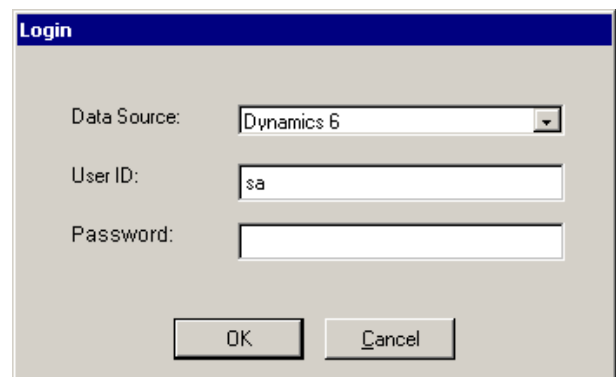
11. Launch Great Plains, a Message box should come up, asking you to **include new code**, click **Yes**.



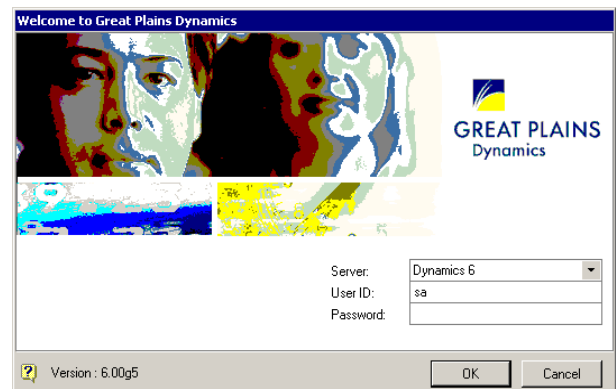
12. A window should coming up telling you what version of Great Plains the chunk file is for, i.e. if you have Dynamics 6.0 MS SQL, the window will say Dynamics 6.0 MS SQL. Click **Ok**. If this window is not correct contact support.



13. **MS MSQ Step Only**, if you are not using MS SQL, please go to the next step. If this window comes up, you will need the **SA** password, enter this in and click **ok**

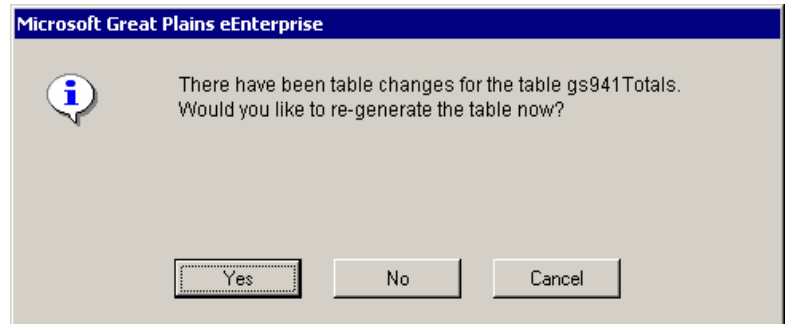


14. **Log into** your company as **SA**.



15. **MS SQL Step Only.** If you are not on MS SQL Please go onto the next step. Click on **Routines** -> **Greenshades MagNET**.

16. **MS SQL Step Only.** If you are not on MS SQL please go to the next step. You will get a series of messages notifying you of table changes. It will ask “Would you like to re-generate the table now?” Click Yes to all of these messages.

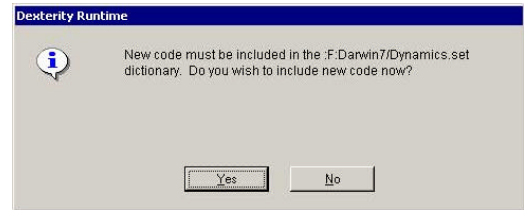


17. Installation Complete. You may now start using Greenshades Mag.NET

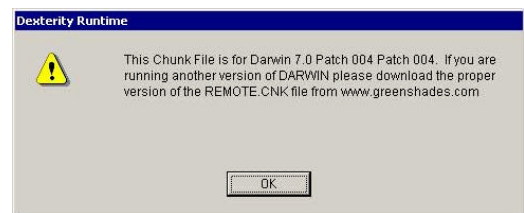


## Step 4 Configure Darwin

18. Launch Darwin, a Message box should come up, asking you to **include new code**, click **Yes**



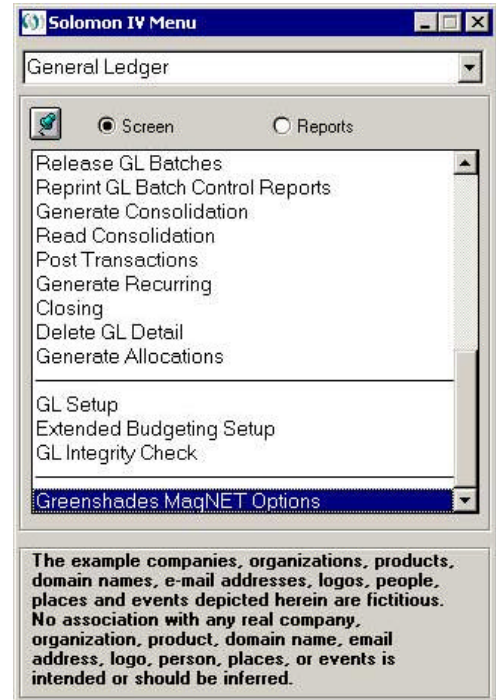
19. A window should coming up telling you what version of Great Plains the chunk file is for, i.e. if you have Dynamics 6.0 MS SQL, the window will say Dynamics 6.0 MS SQL. Click **Ok**. If this window is not correct contact support.



20. Installation Complete. You may now start using Greenshades Mag.NET

## Step 5 Configure Solomon

21. There is no special configuration that needs to be done for Solomon after the installation is complete. To access Greenshades Mag.NET Options in Solomon, click on 'Module', then 'General Ledger', select Greenshades MagNET Options.



## Step 6 Configure Accpac

22. There is no special configuration that needs to be done for Accpac after the installation is complete.

## Step 7 Notes

1. Terminal Server NT 4.0 is not supported. If you are running Terminal Server you will need to be on Terminal Server 2000.
2. If you are installing the software in a Citrix or Terminal Server environment, please make sure that you give the users full access to the directory in which Mag.NET is installed to.
3. Pervasive users May get an error message “An error occurred on table SY\_Toolbar”, this is a known issue, and will not cause any problems with the system. Press **OK** to continue.